

RECEPTION TO YEAR 1

Transition



Temple Meadow
Primary School

Growing together, learning together

YEAR 1 TEAM



Miss Barnham



Miss Skelding

EYFS – Year 1 AHT



Miss Evans



Temple Meadow
Primary School

Growing together, learning together

YEAR 1 LSP'S



Mrs Bagail



Mrs Atherton



Temple Meadow
Primary School

Growing together, learning together

Temple Meadow

Primary School

An Irresistible Journey towards a bright future

- Pupils enter at the start of the day at 8.45am through the gates outside of the KS1 building.
- Messages to class teachers can be passed on through the adults on the gate at the start of each day.
- Pupils are dismissed at 3.20 through the gates at the entrance to the KS1 building.



Temple Meadow
Primary School

Growing together, learning together

Temple Meadow

Primary School

An Irresistible Journey towards a bright future

- The end of Foundation Stage assessments show us where your child is on their learning journey. Planning for your child will start from this point in September as they enter KS1.
- Children who did not achieve the Early Learning Goal in Reception will still be working towards these ELGs in Year 1 until they achieve expected.
- Lessons will be differentiated and will still have play opportunities to cater for these needs.





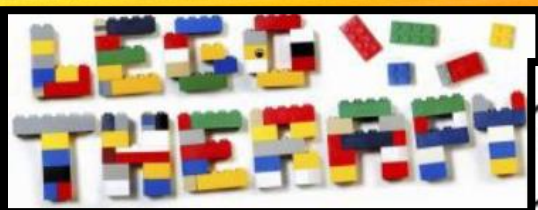
CURRICULUM



Autumn term texts – Funnybones, Little Red Riding Hood, The Owl who was Afraid of the Dark, Stickman

Spring term topic – Snow White, Jungle Book

Summer term topic – At the Beach: postcards from Crabby Spit, Magnificent ocean creatures, The Lighthouse Keeper's lunch



INTERVENTIONS

- The aim is to provide a short focused based intervention for a short period of time so that gaps are bridged as soon as possible.
- Throughout the afternoons additional sessions are run to support children in areas such as Phonics, Writing, Maths and Handwriting.
- Again, these sessions are there to support your child in school and to address gaps in learning in the short term.
- You may find that your child will be part of an additional group for example 'Nurture'. All of these put in place if children are showing a particular need and it is a support mechanism to help them
- Sessions are run by our trained LSPs.



Temple Meadow
Primary School

Growing together, learning together

ASSESSMENT

- During Year 1, pupils will be assessed in all subjects through the Learning Ladders.
- Other subjects will be assessed using Temple Meadow assessment trackers.
- Pupils will also complete the Phonics screening test in June. This National test will assess pupils' knowledge of phonic sounds and their ability to read them.



Temple Meadow
Primary School

Growing together, learning together

HOME LEARNING

- Typically, all children will be given a home reading book and a reading record to record when you have heard your child read. We encourage children to read at home daily for 5-10 minutes. Further communication will be sent if there are any changes to our typical practice.
- Weekly Maths homework (linked to the learning journey that week) will be sent home to support in-class learning.
- A weekly phonics task (linked to the learning journey that week) will be sent home to support in-class learning.



Temple Meadow
Primary School
Growing together, learning together

UNIFORM

Shirt/blouse	White
Polo t-shirt	White or Red
Trousers/skirt/tunic	Grey or black
Cardigan/pullover/jumper	Scarlet Red
Socks	White/grey/black or muted design
Tights	White/grey/red/black or muted design
Shoes	<p>Sensible, flat, black/brown/grey</p> <p>Can be a trainer type shoe but must be completely plain and black / brown / grey (no logos as branded wear is not part of our uniform policy)</p> <p>In winter months a flat plain sensible ankle boot can be worn but must be plain and allow for children to move easily such as sitting cross legged in an assembly or classroom. Anything that doesn't allow for ease of movement is not suitable.</p>
Headscarves	Plain black/grey/brown/red



UNIFORM

- Please ensure all uniform is clearly labelled with your child's name.
- Long hair needs to be tied back and any hair accessory i.e. bows and hair slides must be suitable for a school day.
- Only stud earrings and watches are permitted to be worn in school.
- Please also note children should not wear nail varnish or make-up at school.
- We also strongly discourage pupils from wearing items with logos.





PE KIT REMINDER

Black shorts and a white T-shirt for indoors lessons in the hall (tracksuit bottoms and sweatshirts should only be necessary in the playground/on the field on a cold day). Tracksuits must be plain and not have logos.

- Properly fitting black pumps or plimsolls.
- No jewellery to be worn in any P.E. session (pierced earrings need to be removed prior to any P.E. activity). We therefore advise that ear piercing only takes place at the beginning of the 6 week holiday.
- Please ensure all items of P.E. kit are clearly labelled with your child's name.
- P.E. kits should be available in school at all times.



Temple Meadow
Primary School

Growing together, learning together



WATER AND HEALTHY EATING

- All children have access to water coolers in school, which they can use to fill up their water bottles.
- We strongly advise that re-useable water bottles are labelled with your child's name. School does not provide cups for water throughout the day.
- Snacks for break time must be healthy – crisps, chocolate, cake etc are not acceptable snacks.
- Lunch boxes should also encourage healthy eating.



Temple Meadow
Primary School

Growing together, learning together



MOBILE PHONES AND UNNECESSARY ITEMS IN SCHOOL

- Mobile phones are not permitted in school.
- Children must not bring in unnecessary items e.g. stationery, pencil cases, fidget toys.

PASTORAL SUPPORT TEAM



Miss Daniels



Mrs Blount



Mrs Sprigg

The pastoral team are available on the playground first thing in a morning and are approachable as an extra point of contact for any issues you may wish to discuss relating to home/school life.

The pastoral team are integral to maintaining high levels of safeguarding at Temple Meadow, working closely to support pupils and families.



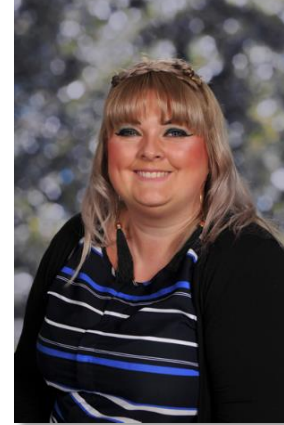
Temple Meadow
Primary School

Growing together, learning together

**Keeping
children safe
is everyone's
responsibility**



SAFEGUARDING



- The designated person for safeguarding is: **Miss Dale**
- If you have any concerns regarding safeguarding please do tell a member of staff.



Temple Meadow
Primary School

Growing together, learning together

INCLUSION LEAD AND SENDCO



- Our Inclusion lead and Special Educational Needs Co-Ordinator is:
Mrs Van Straaten
- Mrs Van Straaten also leads on CIC (children in care).



Temple Meadow
Primary School

Growing together, learning together

Thank you for listening, are there any questions?



Temple Meadow
Primary School

Growing together, learning together